

## Operating Instructions Plasma Television



# VIERA

## Contents

### Be Sure to Read

Important Notice .....	2
Safety Precautions .....	3

### Quick Start Guide

Accessories .....	5
Connections .....	7
Identifying Controls .....	11
First time Auto Tuning .....	13

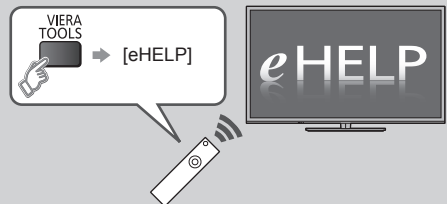
### Using your VIERA

Watching TV .....	13
How to Use eHELP .....	14

### Others

FAQs .....	15
Maintenance .....	15
Specifications .....	16

For more detailed instructions, refer to [eHELP]  
(Built-in Operating Instructions).



• How to use [eHELP] ➔ (p. 14)

Thank you for purchasing this Panasonic product.  
Please read these instructions carefully before operating this product and  
retain them for future reference.

The images shown in this manual are for illustrative purposes only.



# Important Notice



(S60K series)



- For the information of the trademarks, refer to [eHELP] (Support > Licence).

## Do not display any still part of the image for a long period

In such cases the still part of the image remains dimly on the plasma screen ("image retention"). This is not considered a malfunction and is not covered by the warranty.

Typical still image parts:

- Channel number, channel logo and other logos
- Still or moving pictures viewed in 4:3 or 14:9 aspect ratio
- Video games



To avoid image retention, the screen saver may be activated (VIERA logo moves) or the on-screen message may move after a few minutes if no signals are sent or no operations are performed.

Panasonic does not guarantee operation and performance of peripheral devices made by other manufacturers; and we disclaim any liability or damage arising from operation and/or performance from usage of such other maker's peripheral devices.

The recording and playback of content on this or any other device may require permission from the owner of the copyright or other such rights in that content. Panasonic has no authority to and does not grant you that permission and explicitly disclaims any right, ability or intention to obtain such permission on your behalf. It is your responsibility to ensure that your use of this or any other device complies with applicable copyright legislation in your country. Please refer to that legislation for more information on the relevant laws and regulations involved or contact the owner of the rights in the content you wish to record or playback.

This product is licensed under the AVC patent portfolio license for the personal and non-commercial use of a consumer to (i) encode video in compliance with the AVC Standard ("AVC Video") and/or (ii) decode AVC Video that was encoded by a consumer engaged in a personal and non-commercial activity and/or was obtained from a video provider licensed to provide AVC Video. No license is granted or shall be implied for any other use. Additional information may be obtained from MPEG LA, LLC. See <http://www.mpegla.com>.

Panasonic and its affiliates make no representations or warranties of any kind with respect to the USB devices and the performance of communication between the USB devices and the USB port of Panasonic products, and expressly disclaims any and all warranties, whether express or implied or otherwise, including without limitation any implied warranty of fitness for a particular purpose, any loss of data, and any implied warranties arising from course of dealing or course of performance of data communication between the USB devices and the USB port of Panasonic products.

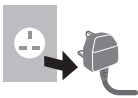
# Safety Precautions

To help avoid risk of electrical shock, fire, damage or injury, please follow the warnings and cautions below:

## ■ Mains plug and lead

### Warning

If you detect anything unusual, immediately remove the mains plug. Mains plug types vary between countries.



- This TV is designed to operate on AC 220-240 V, 50 / 60 Hz. (S60P series: AC 110-240 V, 50 / 60 Hz)
- Insert the mains plug fully into the socket outlet.
- Ensure that the mains plug is easily accessible.
- Disconnect the mains plug when cleaning the TV.
- Do not touch the mains plug with wet hands.



- Do not damage the mains lead.
  - Do not place a heavy object on the lead.



- Do not place the lead near a high temperature object.



- Do not pull on the lead. Hold onto the mains plug body when disconnecting the plug.



- Do not move the TV with the lead plugged into a socket outlet.
- Do not twist the lead, bend it excessively or stretch it.
- Do not use a damaged mains plug or socket outlet.
- Ensure the TV does not crush the mains lead.
- Do not use any mains lead other than that provided with this TV.
- Ensure the earth pin on the mains plug is securely connected to prevent electrical shock.
  - An apparatus with CLASS I construction shall be connected to a mains socket outlet with a protective earth connection.

## ■ Take care

### Warning

- Do not remove covers and never modify the TV yourself as live parts are accessible when they are removed. There are no user serviceable parts inside.
- Do not expose the TV to rain or excessive moisture. This TV must not be exposed to dripping or splashing water and objects filled with liquid, such as vases, must not be placed on top of or above the TV.
- Do not insert foreign objects into the TV through the air vents.
- Do not use an unapproved pedestal / mounting equipment. Be sure to ask your local Panasonic dealer to perform the setup or installation of approved wall-hanging brackets.



- Do not apply strong force or impact to the display panel.
- Do not place the TV on sloped or unstable surfaces, and ensure that the TV does not hang over the edge of the base.
- Do not expose the TV to direct sunlight and other sources of heat.



**To prevent the spread of fire, keep candles or other open flames away from this product at all times**



## ■ Dangerous part / Small object

### Warning

- This product contains possibly dangerous parts such as plastic bags, that can be breathed in or swallowed by young children accidentally. Keep these parts out of reach of young children.

## ■ Pedestal

### Warning

- Do not disassemble or modify the pedestal.

### Caution

- Do not use any pedestal other than the one provided with this TV.
- Do not use the pedestal if it becomes warped or physically damaged. If this occurs, contact your nearest Panasonic dealer immediately.
- During setup, make sure that all screws are securely tightened.
- Ensure that the TV does not suffer any impact during installation of the pedestal.
- Ensure that children do not climb onto the pedestal.
- Install or remove the TV from the pedestal with at least two people.
- Install or remove the TV by the specified procedure.

## ■ Radio wave

### Warning

- Do not use the TV in any medical institutions or locations with medical equipment. Radio waves may interfere with the medical equipment and cause accidents due to the malfunction.
- Do not use the TV near any automatic control equipment such as automatic doors or fire alarms. Radio waves may interfere with the automatic control equipment and cause accidents due to the malfunction.
- Keep the distance at least 22 cm from the TV when you have a cardiac pacemaker. Radio waves may interfere with the operation of the pacemaker.
- Do not disassemble or alter the TV in any way.

## ■ Built-in wireless LAN

### Caution

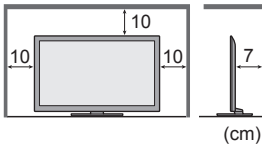
- Do not use the built-in wireless LAN to connect to any wireless network (SSID\*) for which you do not have usage rights. Such networks may be listed as a result of searches. However, using them may be regarded as illegal access.  
\*SSID is a name for identifying a particular wireless network for transmission.
- Do not subject the built-in wireless LAN to high temperatures, direct sunlight or moisture.
- Data transmitted and received over radio waves may be intercepted and monitored.
- The built-in wireless LAN uses 2.4 GHz and 5 GHz frequency bands. To avoid malfunctions or slow response caused by radio wave interference, keep the TV away from the devices such as other wireless LAN devices, microwaves, mobile phones and the devices that use 2.4 GHz and 5 GHz signals when using the built-in wireless LAN.
- When noises occur due to the static electricity, etc., the TV might stop operating for the protection of the devices. In this case, turn the TV off with Mains power On / Off switch, then turn it on again.
- Additional information for the wireless LAN and access point may be on the following website. (English only)  
<http://panasonic.net/viera/support>

## ■ Ventilation

### Caution

Allow sufficient space around the TV in order to help prevent excessive heat, which could lead to early failure of some electronic components.

Minimum distance:



- Ventilation should not be impeded by covering the ventilation openings with items such as newspapers, tablecloths and curtains.
- Whether you are using a pedestal or not, always ensure the vents at the bottom of the TV are not blocked and there is sufficient space to enable adequate ventilation.



## ■ Moving the TV

### Caution

Before moving the TV, disconnect all cables.

- The TV is heavy. Move the TV with at least two people. Support as shown to avoid injury by the TV tipping or falling.



- Transport only in upright position. Transporting the TV with its display panel facing upwards or downwards may cause damage to the internal circuitry.

## ■ When not in use for a long time

### Caution

This TV will still consume some power even in the Off mode, as long as the mains plug is still connected to a live socket outlet.

- Remove the mains plug from the wall socket when the TV is not in use for a prolonged period of time.

## ■ Use conditions

### Caution

- This appliance is intended for use in tropical climates.

## ■ Battery for the Remote Control

### Caution

- Incorrect installation may cause battery leakage, corrosion and explosion.
- Replace only with the same or equivalent type.
- Do not mix old and new batteries.
- Do not mix different battery types (such as alkaline and manganese batteries).
- Do not use rechargeable batteries (Ni-Cd, etc.).
- Do not burn or break up batteries.
- Do not expose batteries to excessive heat such as sunshine, fire or the like.
- Make sure you dispose of batteries correctly.

# Accessories

## Remote Control

➔ (p. 11)



• N2QAYB000825

## Batteries (2)

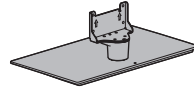
• R6

➔ (p. 11)



## Pedestal

➔ (see below)



## Mains lead

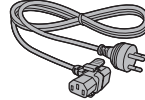
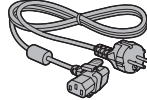
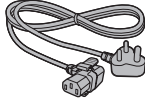
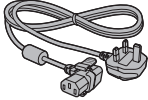
➔ (p. 7)

(S60K series)  
(S60M series)  
(S60P series)

(S60D series)

(S60G series)

(S60T series)



## Operating Instructions

- Accessories may not be placed all together. Take care not to throw them away unintentionally.
- For the information of optional accessories, refer to [eHELP] (Support > Optional accessories).

## Assembling / Removing the pedestal

### (A) Assembly screw

(7) 50-inch model

(12) 60-inch model



M5 × 16

### (B) Assembly screw

(4) 50-inch model



M4 × 10

### (C) Bracket



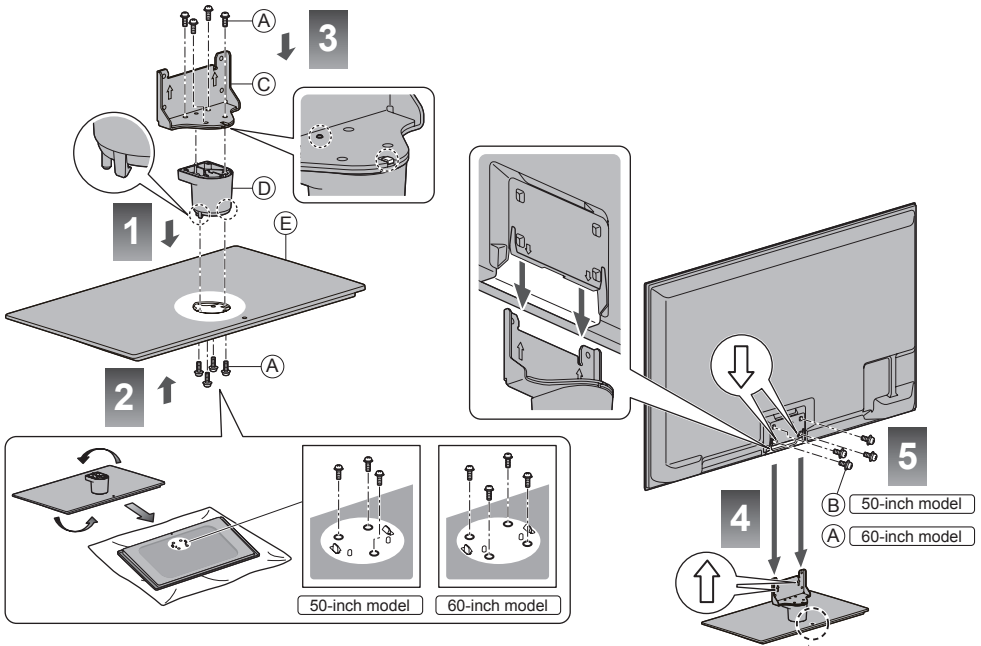
### (E) Base



### (D) Neck



## ■ Assembling the pedestal



### Removing the pedestal from the TV

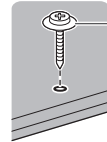
Be sure to remove the pedestal in the following way when using the wall-hanging bracket or repacking the TV.

- 1** Remove the assembly screws (B) (50-inch model) / (A) (60-inch model) from the TV.
- 2** Pull out the pedestal from the TV.
- 3** Remove the assembly screws (A) from the bracket.
- 4** Remove the assembly screws (A) from the back of the base and pull out the neck.

(50-inch model)

Secure the base as shown below to prevent the TV from falling over.

- The place where the base is secured should be thick enough and made of hard material.



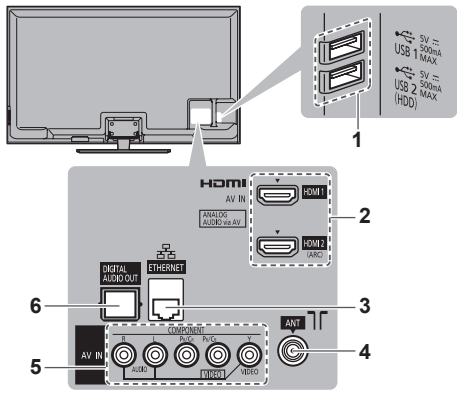
Commercially available screw  
(not supplied)

Diameter: 3 mm  
Length: 25 - 30 mm

# Connections

- External equipment and cables shown are not supplied with this TV.
- Ensure that the unit is disconnected from the mains socket before attaching or disconnecting any leads.
- Check the type of terminals and cable plugs are correct when connecting.
- Always use a fully wired HDMI cable.
- Keep the TV away from electronic equipment (video equipment, etc.) or equipment with an infrared sensor. Otherwise, distortion of image / sound may occur or operation of other equipment may be interfered.
- Also read the manual of the equipment being connected.

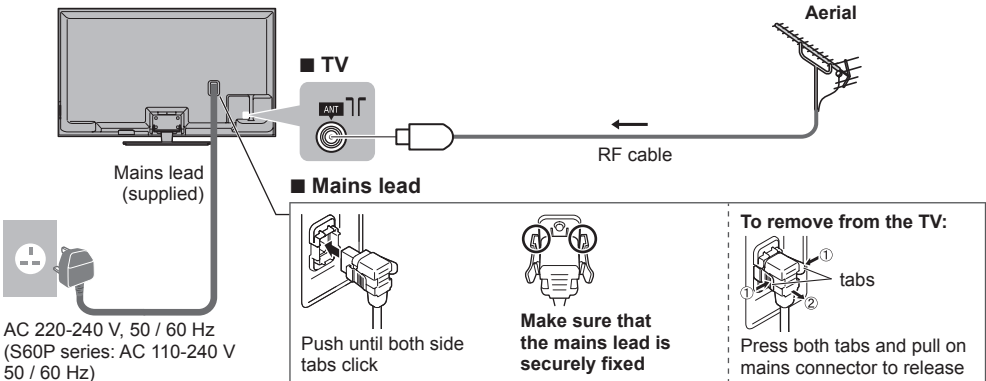
## Terminals



- 1 USB 1 - 2 port
- 2 HDMI1 - 2 ➔ (p. 8, 9)
- 3 ETHERNET ➔ (p. 8)
- 4 Aerial terminal ➔ (see below)
- 5 AV (COMPONENT / VIDEO) ➔ (p. 9)
- 6 DIGITAL AUDIO OUT

## Basic connections

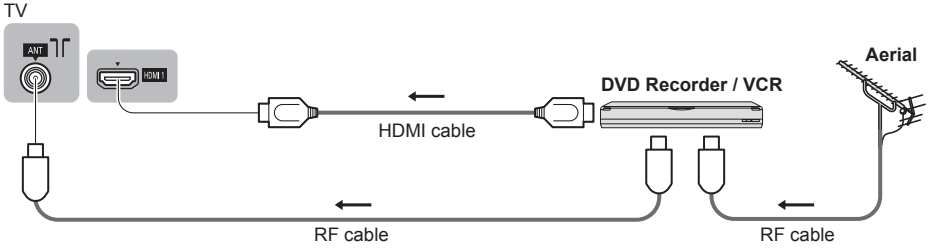
### Mains lead and aerial



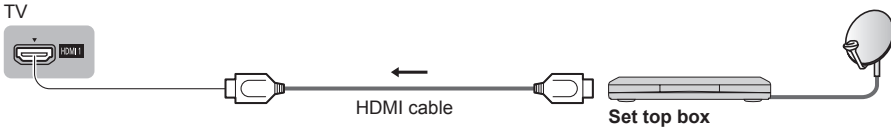
- Keep RF (aerial) cable away from the mains lead to avoid and minimise mains interference pickup.
- Do not place the RF cable under the TV.
- An aerial, correct cable (75 Ω coaxial) and correct terminating plug are required to obtain optimum quality picture and sound.
- If a communal aerial system is used, you may require the correct connection cable and plug between the wall aerial socket and the TV.
- Your local Television Service Centre or dealer may be able to assist you in obtaining the correct aerial system for your particular area and the accessories required.
- Any matters regarding aerial installation, upgrading of existing systems or accessories required, and the costs incurred, are the responsibility of you, the customer.

## AV devices

### ■ DVD Recorder / VCR



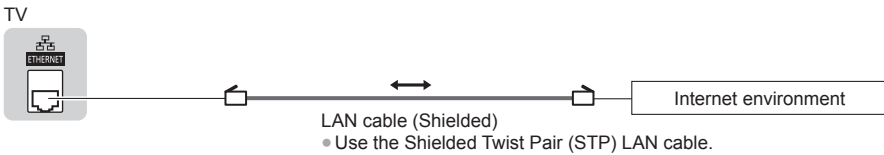
### ■ Set top box



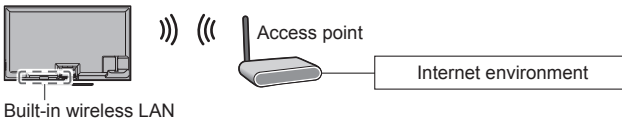
## Network

- To enable the network service functions (VIERA Connect, etc.), you need to connect the TV to a broadband network environment. If you do not have any broadband network services, please consult your retailer for assistance.
- Prepare the internet environment for wired connection or wireless connection.
- Setup of the network connection will start when first using the TV. ➔(p. 13)

### ■ Wired connection



### ■ Wireless connection



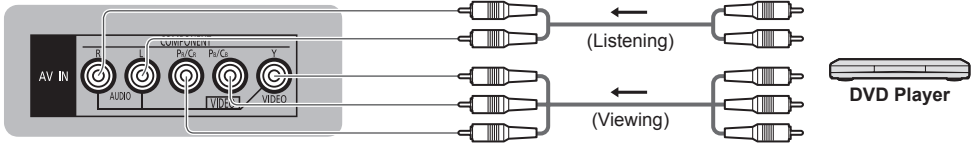


## Other connections

### ■ DVD player

(COMPONENT equipment)

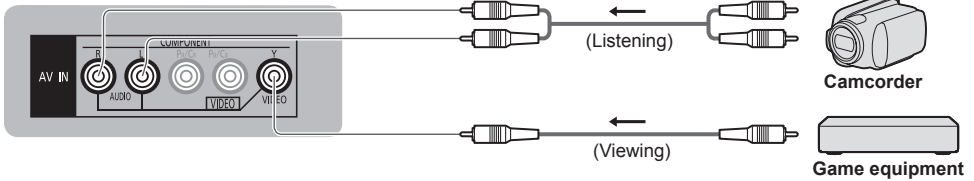
TV



### ■ Camcorder / Game equipment

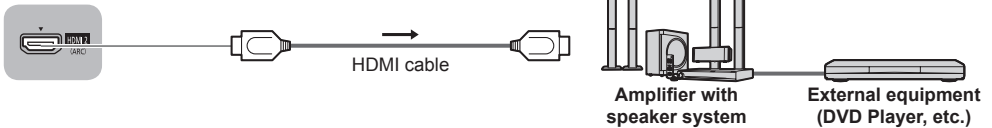
(VIDEO equipment)

TV



### ■ Amplifier (to listen with speakers)

TV



- Use HDMI2 for connecting an amplifier. This connection is applicable when using an amplifier that has ARC (Audio Return Channel) function.  
As for an amplifier without ARC function, use DIGITAL AUDIO OUT.
- To enjoy the sound from the external equipment in multi-channel sound (e.g. Dolby Digital 5.1ch), connect the equipment to the amplifier. For the connections, read the manuals of the equipment and amplifier.

## Types of connectable equipment to each terminal

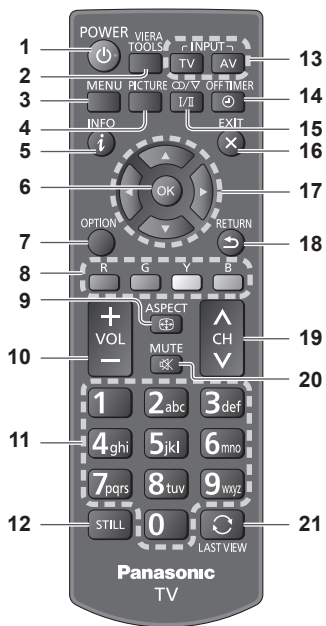
Features	Terminal				
	AV		DIGITAL AUDIO OUT	ETHERNET	HDMI 1 - 2
	COMPONENT	VIDEO			
To play back videocassettes / DVDs (VCR / DVD Player)	<input type="radio"/>	<input type="radio"/>			<input type="radio"/>
To watch satellite broadcasts (Set top box)		<input type="radio"/>			<input type="radio"/>
To watch camcorder images (Video camera)		<input type="radio"/>			<input type="radio"/>
To play games (Game equipment)		<input type="radio"/>			<input type="radio"/>
To use amplifier with speaker system			<input type="radio"/>		<input type="radio"/> *
To use network services				<input type="radio"/>	
VIERA Link					<input type="radio"/>

: Recommended Connection

\*: Use HDMI2 for connecting an amplifier. This connection is applicable when using an amplifier that has ARC (Audio Return Channel) function.

# Identifying Controls

## Remote Control



### 1 Standby On / Off switch

### 2 VIERA TOOLS

- Displays some special feature icons and accesses easily.

### 3 [Main Menu]

- Press to access Picture, Sound, Network, Timer, Setup and Help Menus.

### 4 Picture Selection

- Changes [Viewing Mode].

### 5 Information

- Displays channel and programme information.

### 6 OK

- Confirms selections and choices.
- Press after selecting channel positions to quickly change channel.

### 7 [Option Menu]

- Easy optional setting for viewing, sound, etc.

### 8 Coloured buttons (red-green-yellow-blue)

- Used for the selection, navigation and operation of various functions.

### 9 Aspect

- Changes aspect ratio.

### 10 Volume Up / Down

### 11 Numeric buttons

- Changes channel.
- Sets characters.
- When in Standby mode, switches TV on.

### 12 STILL

- Freeze / unfreeze picture.

### 13 Input mode selection

- TV - switches to TV mode.
- AV - switches to AV input mode from Input Selection list.

### 14 Off Timer

- Sets the time for the TV to automatically turn off.

### 15 Sound Selection

- Changes multiplex sound mode (if available).

### 16 Exit

- Returns to the normal viewing screen.

### 17 Cursor buttons

- Makes selections and adjustments.

### 18 Return

- Returns to the previous menu / page.

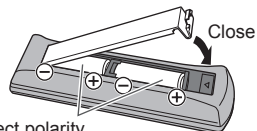
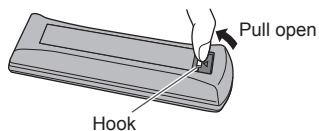
### 19 Channel Up / Down

### 20 Sound Mute On / Off

### 21 Last view

- Switches to previously viewed channel or input mode.

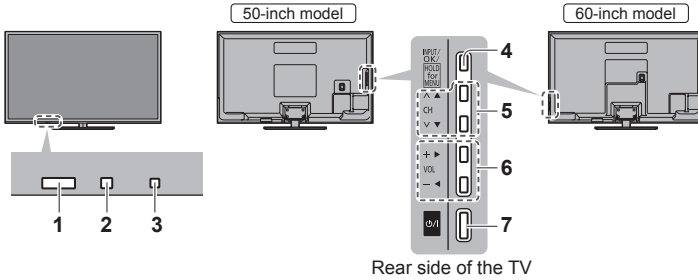
## ■ Installing / Removing batteries



Note the correct polarity  
(+ or -)

## Indicator / Control panel

- When pressing 4, 5, 6 buttons, the control panel guide appears on the side of the screen for 3 seconds to highlight the pressed button.



### 1 Remote control signal receiver

- Do not place any objects between the TV remote control signal receiver and remote control.

### 2 Ambient sensor

- Senses brightness to adjust picture quality when [Ambient Sensor] in the Picture Menu is set to [On].

### 3 Power LED

**Red:** Standby

**Green:** On

- The LED blinks when the TV receives a command from the remote control.

### 4 Input mode selection

- Press repeatedly until you reach the desired mode.

#### [Main Menu]

- Press and hold for about 3 seconds to display main menu.

**OK** (when in the menu system)

### 5 Channel Up / Down

Cursor Up / Down (when in the menu system)

### 6 Volume Up / Down

Cursor Left / Right (when in the menu system)

### 7 Mains power On / Off switch

- Use to switch the mains power.

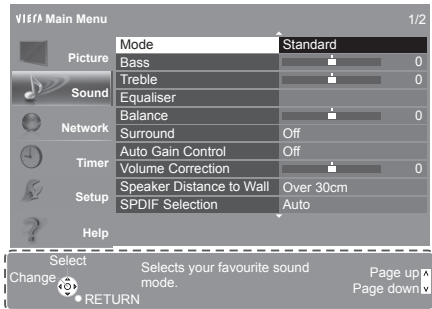
## Using the On Screen Displays - Operation guide

Many features available on this TV can be accessed via the On Screen Display menu.

### ■ Operation guide

Operation guide will help your operation by using the remote control.

Example: [Sound Menu]



### ■ How to use remote control

**MENU**



Open the main menu



Move the cursor / select from a range of options / select the menu item (up and down only) / adjust levels (left and right only)



Access the menu / store settings after adjustments have been made or options have been set

**RETURN**



Return to the previous menu

**EXIT**



Exit the menu system and return to the normal viewing screen

# First time Auto Tuning

Automatically sets up the TV and searches for available TV channels when the TV is turned on for the first time.

- These steps are not necessary if the setup has been completed by your local dealer.
- Please complete connections (p. 7 - 10) and settings (if necessary) of the connected equipment before starting Auto Tuning. For details of settings for the connected equipment, read the manual of the equipment.

## 1 Plug the TV into mains socket and turn power on

POWER • Takes a few seconds to be displayed.



## 2 Select the following items

Set up each item by following the on-screen instructions.

### Select your language

#### Select [Home]

Select [Home] viewing environment to use in your home environment.

- [Shop] is for shop display.
- To change viewing environment later on, you will need to initialise all settings by accessing Shipping Condition.

### Set up the network connection

#### Select your country

#### Select your area

- When selecting [CATV/Other], press the OK button, and then select the Channel Plan from Indian CATV, South Africa, American System, American CATV or Japan CATV.

## Auto Tuning is now complete and your TV is ready for viewing.

If tuning has failed, check the connection of the network, RF cable, and then follow the on-screen instructions.

### Note

- The TV will automatically go into Standby mode when no operation is performed for 4 hours if [Auto Standby] in the Timer Menu is set to [On].
- The TV will automatically go into Standby mode when no signal is received and no operation is performed for 10 minutes if [No signal Power off] in the Timer Menu is set to [On].
- To retune all channels → [Auto Tuning] in [Tuning Menu] (Setup Menu)
- To initialise all settings → [Shipping Condition] in [System Menu] (Setup Menu)

# Watching TV

## 1 Turn power on

⏻ (TV)

or



POWER • Mains power On / Off switch should be on. (p. 12)  
(Remote Control)

## 2 Select TV mode

TV

## 3 Select a channel

▲ up  
CH  
▼ down

or

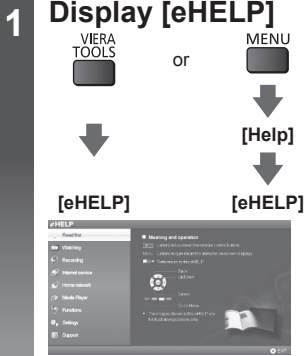
1 2 3  
4 5 6  
7 8 9  
0

• To select two-digit channel position number, e.g. 39

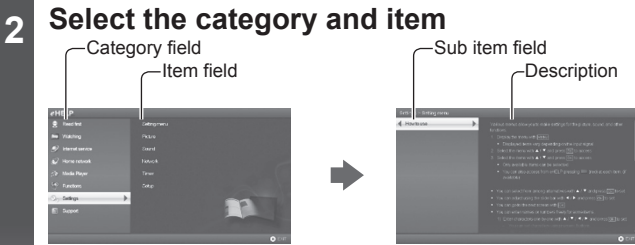
3 def 9

# How to Use eHELP

[eHELP] is the detailed operating instructions built into the TV, and helps you to get more understanding of the operations for each feature.



- [Read first] will be displayed on the top page. Please read these instructions fully to get more understanding of the operation in [eHELP].
- If this is not the first time to view [eHELP] from when the TV is turned on, the confirmation screen is displayed to select whether [First Page] or [Last Page].



- 
- ① select category  
② access
- 
- ③ select item  
④ access
- 
- ⑤ select sub item  
⑥ access

- To return to the previous field



- To scroll the description (if more than 1 page)  
While the description is highlighted



- To display the menu related to the description (only for some descriptions)



# FAQs

Before requesting service or assistance, please follow these simple guides to solve the problem.

- For more information, refer to [eHELP] (Support > FAQs).

## The TV does not switch on

- Check the mains lead is plugged into the TV and the socket outlet.

## The TV goes into Standby mode

- Auto power standby function is activated.

## The remote control does not work or is intermittent

- Are the batteries installed correctly? ➔ (p. 11)
- Has the TV been switched on?
- The batteries may be running low. Replace them with new ones.
- Point the remote control directly at the TV's remote control signal receiver (within about 7 m and a 30 degree angle of the signal receiver).
- Situate the TV away from sunshine or other sources of bright light not to shine on the TV's remote control signal receiver.

## No image can be displayed

- Check the TV is turned on.
- Check the mains lead is plugged into the TV and the socket outlet.
- Check the correct input mode is selected.
- Check the setting of [AV] ([COMPONENT] / [VIDEO]) in [Input Selection] to match the output of the external equipment.
- Is [Contrast], [Brightness] or [Colour] in the Picture Menu set to the minimum?
- Check all required cables and connections are firmly in place.

## Unusual image is displayed

- Turn the TV off with Mains power On / Off switch, then turn it on again.
- If the problem persists, initialise all settings. ➔ [Shipping Condition] in [System Menu] (Setup Menu)

## Unusual sound from the TV

- When the power is on, drive noise may be heard from inside the TV (not a sign of faulty operation).

## Parts of the TV become hot

- Even if the temperature of parts of the front, top and rear panels has risen, these temperature rises do not cause any problems in terms of performance or quality.

# Maintenance

**First, remove the mains plug from the socket outlet.**

## Display panel, Cabinet, Pedestal

### Regular care:

Gently wipe the surface of the display panel, cabinet, or pedestal by using a soft cloth to clean the dirt or fingerprints.

### For stubborn dirt:

First clean the dust on the surface. Dampen a soft cloth with clean water or diluted neutral detergent (1 part detergent to 100 parts water). Wring the cloth and wipe the surface. Finally, wipe away all the moisture.

### Caution

- Do not use a hard cloth or rub the surface too hard, otherwise this may cause scratches on the surface.
- Take care not to subject the TV's surfaces to water or detergent. Liquid inside the TV could lead to product failure.
- Take care not to subject the surfaces to insect repellent, solvent, thinner or other volatile substances. This may degrade surface quality or cause peeling of the paint.
- The surface of the display panel is specially treated and may be easily damaged. Take care not to tap or scratch the surface with your fingernail or other hard objects.
- Do not allow the cabinet and pedestal to make contact with a rubber or PVC substance for a long time. This may degrade surface quality.

## Mains plug

Wipe the mains plug with a dry cloth at regular intervals. Moisture and dust may cause fire or electrical shock.

# Specifications

		50-inch model		60-inch model			
<b>Model No.</b>		TH-P50S60D TH-P50S60M TH-P50S60T	TH-P50S60P	TH-P60S60D TH-P60S60G TH-P60S60K TH-P60S60M TH-P60S60T	TH-P60S60P		
<b>Power source</b>		AC 220-240 V 50 / 60 Hz	AC 110-240 V 50 / 60 Hz	AC 220-240 V 50 / 60 Hz	AC 110-240 V 50 / 60 Hz		
<b>Power</b>	<b>Rating</b>	285 W	290 W	300 W	305 W		
	<b>Standby power consumption</b>	0.3 W					
<b>Visible screen size (diagonal)</b>		127 cm		153 cm			
<b>Display resolution</b>		1,920 (W) × 1,080 (H)					
<b>Panel</b>		Plasma Display					
<b>Dimensions (W × H × D)</b>		1,172 mm × 751 mm × 295 mm (With Pedestal) 1,172 mm × 698 mm × 80 mm (TV only)		1,397 mm × 878 mm × 333 mm (With Pedestal) 1,397 mm × 824 mm × 80 mm (TV only)			
<b>Mass</b>		24.0 kg Net (With Pedestal) 21.0 kg Net (TV only)		34.0 kg Net (With Pedestal) 30.0 kg Net (TV only)			
<b>Connection terminals</b>	<b>AV IN (COMPONENT / VIDEO)</b>	<b>VIDEO</b>	RCA PIN Type × 1	1.0 V[p-p] (75 Ω)			
		<b>AUDIO L - R</b>	RCA PIN Type × 2	0.5 V[rms]			
		<b>Y Pb/Cb, Pr/Cr</b>	1.0 V[p-p] (including synchronisation) ±0.35 V[p-p]				
	<b>HDMI 1 / 2 input</b>	TYPE A Connectors HDMI 1: Content Type, Deep Colour HDMI 2: Content Type, Audio Return Channel, Deep Colour • This TV supports "HDAVI Control 5" function.					
	<b>ETHERNET</b>	10BASE-T / 100BASE-TX					
	<b>USB 1 / 2</b>	USB 2.0 DC 5 V, Max. 500 mA					
	<b>DIGITAL AUDIO OUT</b>	PCM / Dolby Digital / DTS, Fibre optic					
<b>Sound</b>	<b>Speaker</b>	(120 mm × 40 mm) × 2, 8 Ω					
	<b>Audio output</b>	20 W (10 W + 10 W)					
<b>Receiving systems / Band name</b>		17 Systems		Function	17 Systems		Function
		1	PAL B, G, H	Reception of broadcast transmissions and Playback from Video Cassette Tape Recorders	8	NTSC 4.43/5.5 MHz	Playback from Special VCR's or DVD
		2	PAL I		9	NTSC 4.43/6.0 MHz	
		3	PAL D, K		10	NTSC 4.43/6.5 MHz	
		4	SECAM B, G		11	NTSC 3.58/5.5 MHz	
		5	SECAM D, K		12	NTSC 3.58/6.0 MHz	
		6	SECAM K1		13	NTSC 3.58/6.5 MHz	
		7	NTSC M (NTSC 3.58/4.5 MHz)		14	SECAM I	
					15	PAL 60 Hz/5.5 MHz	Playback from Special Disc Players and Special VCR's or DVD
					16	PAL 60 Hz/6.0 MHz	
			17	PAL 60 Hz/6.5 MHz			



<b>Receiving channels</b>	<b>VHF BAND</b>	<b>UHF BAND</b>	<b>CATV</b>
	2-12 (PAL/SECAM B, K1) 0-12 (PAL B AUST.) 1-9 (PAL B N.Z.) 1-12 (PAL/SECAM D) 1-12 (NTSC M Japan) 2-13 (NTSC M USA)	21-69 (PAL G, H, I/SECAM G, K, K1) 28-69 (PAL B AUST.) 13-57 (PAL D, K) 13-62 (NTSC M Japan) 14-69 (NTSC M USA)	S1-S20 (OSCAR) 1-125 (USA CATV) C13-C49 (JAPAN) S21-S41 (HYPER) Z1-Z37 (CHINA) 5A, 9A (AUST.)
<b>Aerial input</b>	VHF / UHF		
<b>Operating conditions</b>	<b>Temperature:</b> 0 °C - 40 °C <b>Humidity:</b> 20 % - 80 % RH (non-condensing)		
<b>Built-in wireless LAN</b>	<b>Standard compliance and Frequency range*:</b> IEEE802.11a/n 5.15 GHz - 5.35 GHz, 5.47 GHz - 5.85 GHz IEEE802.11b/g/n 2.40 GHz - 2.4835 GHz		
	<b>Security:</b> WPA2-PSK (TKIP/AES) WPA-PSK (TKIP/AES) WEP (64 bit/128 bit)		

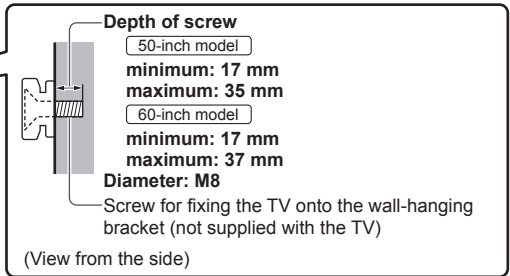
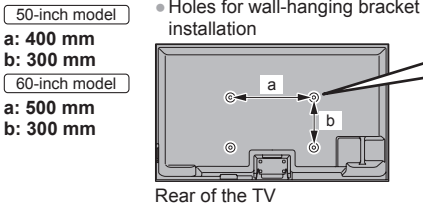
\* The frequency and channel differ depending on the country.

**Note**

- Design and Specifications are subject to change without notice. Mass and Dimensions shown are approximate.
- For the information of the open source software, refer to [eHELP] (Support > Licence).

**■ When using the wall-hanging bracket**

- For the recommended wall-hanging bracket, refer to [eHELP].





A series of 20 horizontal dashed lines spanning the width of the page, intended for handwriting practice.

**UAE**  
**Built-in wireless LAN**

**TRA**

REGISTERED No:  
ER0081229/12  
DEALER No:  
DA0052708/10

**Nigeria**

**Connection and use of this communications  
equipment is permitted by the Nigerian  
Communications Commission**

### Information on Disposal in other Countries outside the European Union



This symbol is only valid in the European Union. If you wish to discard this product, please contact your local authorities or dealer and ask for the correct method of disposal.

**[India]**



For the purpose of recycling to facilitate effective utilization of resources, please return this product to a nearby authorized collection center, registered dismantler or recycler, or Panasonic service center when disposing of this product.

Please see the Panasonic website for further information on collection centers, etc.

<http://www.panasonic.co.in/wps/portal/home>

### Customer's Record

The model number and serial number of this product may be found on its rear panel. You should note this serial number in the space provided below and retain this book, plus your purchase receipt, as a permanent record of your purchase to aid in identification in the event of theft or loss, and for Warranty Service purposes.

**Model Number**

**Serial Number**

**Panasonic Corporation**

Web Site: <http://panasonic.net>

M0113-0